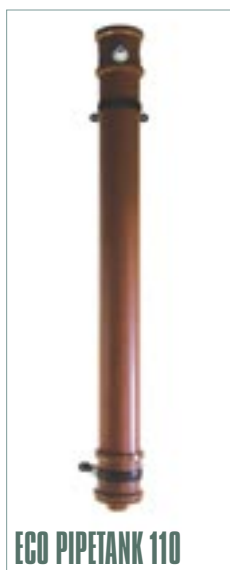


ECO PIPETANK 110 AND 160

ECO-Logic Pipetanks are unique water efficient flushing tanks which enable the full installation benefits of ECO-Logic Electronic Flushing Controls. They offer savings in building space, with associated energy and building cost savings, together with reduced maintenance.

Available for single or dual WC capacities, ECO Pipetanks are designed for concealment in service ducts or behind panel systems. They are vertically mounted to enable a simple and space saving installation. Together with ECO-Logic Controllers and Sensors, ECO Pipetanks deliver a cost effective solution ideal for high demand installations.



ECO PIPETANK 110



ECO PIPETANK 160

Function

Users activate the ECO-Logic flush sensors, which are cable connected to the ECO Controller, then onto the flushing valve fitted on the outlet of the Pipetank. The flush volume/time, mode of operation, lockouts and anti-tamper controls are setup on the controller to building management requirements. When activated, the flush valve opens and closes to those settings.

The ECO Pipetank is designed for vertical installation within a duct or enclosure. They ensure rapid repeat flushing if water storage capacities allow. The float valve automatically stops fill at the chosen level.

Flush times are simple to set using rotary switches in the controller. Timing can reflect water pressure at discharge point, sanitaryware design (i.e. low capacity pans) and can be adjusted to meet changes in water regulations.

An optional ECO Blockage Alert can be fitted to the WC/Urinal waste pipe which prevents flushing when a blockage is detected, avoiding flooding of contaminated water and maintaining hygiene standards. A warning light, alarm or BMS signal notifies management. After clearing the blockage, the system is restarted using a reset button.

Range

ECO Pipetank 110 - For One WC
ECO Pipetank 160 - For Two WCs

Non standard lengths and capacities can be supplied subject to prior consultation.

Features

- Vertically mounted – releases space in ducts
- Supplied pre-fitted with float valve, inlet connection and overflow connection
- Capacities 110 = 10 Litres, 160 = 20 Litres
- Allows rapid repeat flushing
- Top access to float valve and adjustments
- Supplied with secure support bracket and pipe clips
- Heavy duty plastic tank – well insulated
- Connections for outlet 1 1/4" pipe
- Can serve any WC pan
- ECO Pipetank 160 can serve two WCs – when supplied for one WC it has a increased capacity for faster repeat flushing.

Benefits

- A single Pipetank can flush one or two WC pans
- Releases extra space – potential for reduced build costs or improved space utilisation.
- Allows Full and Economy Flush Options
- Capacities allow for rapid repeat flushing
- Controller can operate a re-flush delay for tank refilling
- Cisterns not required – simpler plumbing & maintenance
- Pre-fitted components and connections – for fast and cost effective installation

ECO-Logic Controllers and Sensors

ECO Controllers provide the link between the sensors, valves and outlets. Flow/flush times, operational modes, temperature monitoring, lockouts and anti-tamper controls can all be set on the Controller.

Controller choice depends on several factors and early consultation with ECO-Logic is recommended.

Single Controllers

– some integrated with a sensor.

Multi-Channel Controllers

- to control banks of the same item
- to control a number of different outlets. Typically in a bathroom with a WC, Basin and Shower.

Modular Controllers

– offering total management controls for accommodation or washrooms. Can include water, heating, lighting, communication, audio/visual and security systems. All with BMS links.

Sensor Type	ECO-Logic System	Application	Notes
Non Touch	Trans Sense	WC <input type="checkbox"/>	Fully concealed sensor system, installed behind finished surfaces or urinal bowl, offering high vandal resistance and simple installation. Light touch operation also available.
		Urinal <input type="checkbox"/>	
	Infra Sense	WC <input type="checkbox"/>	Disc or plate mounted sensor. Usually close proximity sensing with variable range settings.
Urinal <input type="checkbox"/>			
One Touch	Passive Infra Red (PIR)	WC <input type="checkbox"/>	Ceiling or wall sensors, for flush control to banks of urinal bowls or troughs or stalls. Operates only when it senses user activity. Duty Flush settings.
		Urinal <input type="checkbox"/>	
One Touch	Trans Sense	WC <input type="checkbox"/>	Fully concealed sensor system, installed behind finished surfaces or urinal bowl. Light touch sensors, offering high vandal resistance.
		Urinal <input type="checkbox"/>	
One Touch	Touch Sense (TS) or React Sense (TA)	WC <input type="checkbox"/>	Touch Sense – solid state with no moving parts. React Sense – a light press action sensor.
		Urinal <input type="checkbox"/>	

* Products are available, but usually for overseas markets. Please contact info@ecologicuk.com for more info.

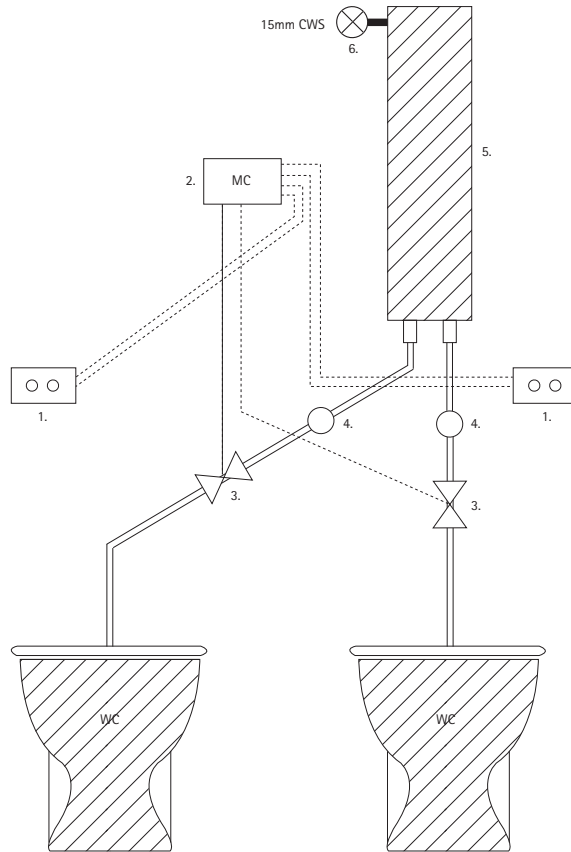
ECO PIPETANK 110 AND 160

Installation Notes

ECO Pipetanks can be installed with any ECO-Logic electronic WC flushing system. Installation requires an ECO 35P Plastic or ECO 1 1/4" D8 Brass Solenoid Valve on the outlet of the Pipetank. The 35P valve has an integral isolation/flow adjuster to assist with setting up of flush volumes. Connecting pipework and suggested fittings are as follows:

DIAGRAM A
PIPETANK 160

1. Sensors (full/economy)
2. ECO-Logic Controller
3. Solenoid Valve
4. Isolation Valve
5. Pipetank 160
6. 15mm Isolation Valve with Strainer



Please see page 3-6 for more installations drawings

Related Product Sheets

ECO One Touch WC Sensors

ECO Touch Sense/React Sense (EW21/EW24)	W19
ECO Single WC Flush Controller (EW21FTS)	W24

ECO Non Touch WC Sensors

ECO Infra Sense (EW22IR)	W20
ECO Trans Sense (EW23CT)	W18
ECO EPS Range (Combination WC/Handwash Products)	W35
ECO Secure Sanitaryware - Heavy Duty Polymer	POL16
ECO Secure Sanitaryware - Stainless Steel	ELC17

ECO-Logic provide solutions for:-

Handwashing • Bathfills • Showering • Flushing • Kitchens

Multi-Channel & Modular Controls for Ensuite Bathrooms & Washrooms

Secure sanitaryware • Lockout Systems • Shutdown Controls • BMS Links

Download at www.ecologicuk.com

Security and Connections

A metal support bracket is provided with each ECO Pipetank and should be secured under the Pipetank to the wall with suitable screws/bolts. Two wall clips are supplied to fit around the pipe. All pipework from Pipetank to WC needs supporting.

Inlet Connection - 1/2" BSP plastic thread.

Overflow - plastic overflow can be fitted to the WC flush pipe after the Solenoid Valve.

Flush Pipe and Connectors - supplied by others

Pre-Fitted Float Valve Adjustment - service access at top of ECO Pipetank needs to be allowed - recommended minimum 250/300mm.

Isolation Valve - it is essential that a 15mm Isolation Valve is fitted to the inlet supply (available from ECO-Logic UK).

Warranties

ECO-Logic Pipetanks	1 year
ECO-Logic Controllers and Sensor Electronics	2 years
ECO-Logic Solenoid Valves (Strainer Protected)	2 years
Brassware and other fittings	1 year

All ECO electronic products are designed, tested and manufactured in the UK to CE standards

Maintenance

The only moving component in an ECO Pipetank is the pre-fitted Float Valve. We recommend that this is cleaned/checked every 12 months, or when overflow discharge is observed. We recommend that outlet pipe seals are inspected every 12 months.

- Spares advice on individual installations are provided in maintenance guides.
- Replacement parts, batteries and service kits are available direct from ECO-Logic UK.
- Maintenance requirements are very low. All product warranties are dependent on fittings being installed in accordance with ECO-Logic instructions.
- Battery life usually between 3-5 years (not Infra Red). Battery in ECOTrans transformers should last upto 10 years, depending on usage.
- All ECO-Logic Controllers have a non-volatile memory which retain setup programmes if power is lost or switched off for maintenance.
- Pipetanks should be installed with service valves to allow inspection and cleaning.

eco-logic uk

Elite House, 70 Warwick Street,
Birmingham B12 0NL

T. +44 (0)121 766 3016 F. +44 (0)121 766 3064

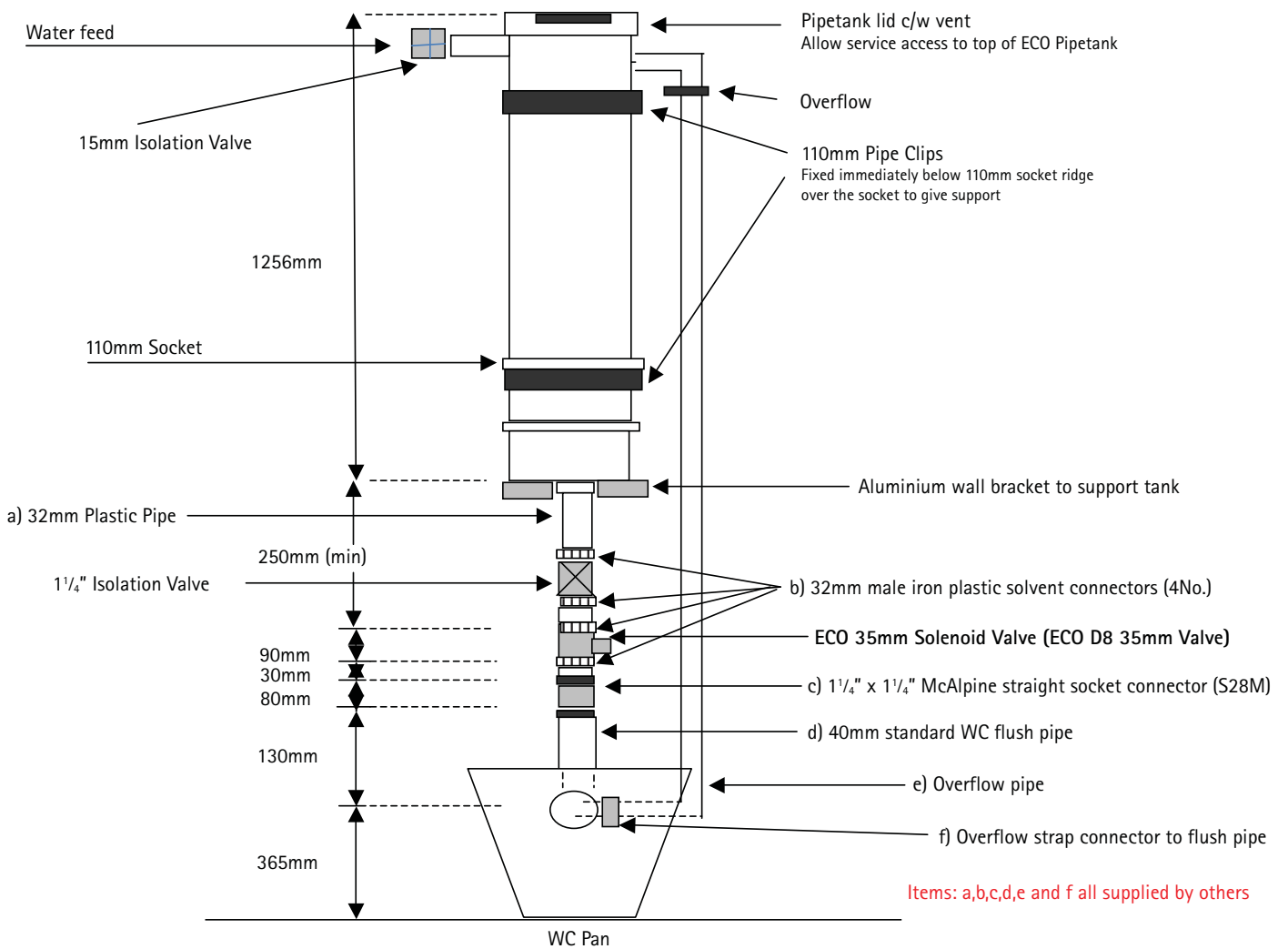
E. info@ecologicuk.com W. www.ecologicuk.com



ECO PIPETANK 110 AND 160

DIAGRAM B
ECO PIPETANK 110 WITH D8 VALVE

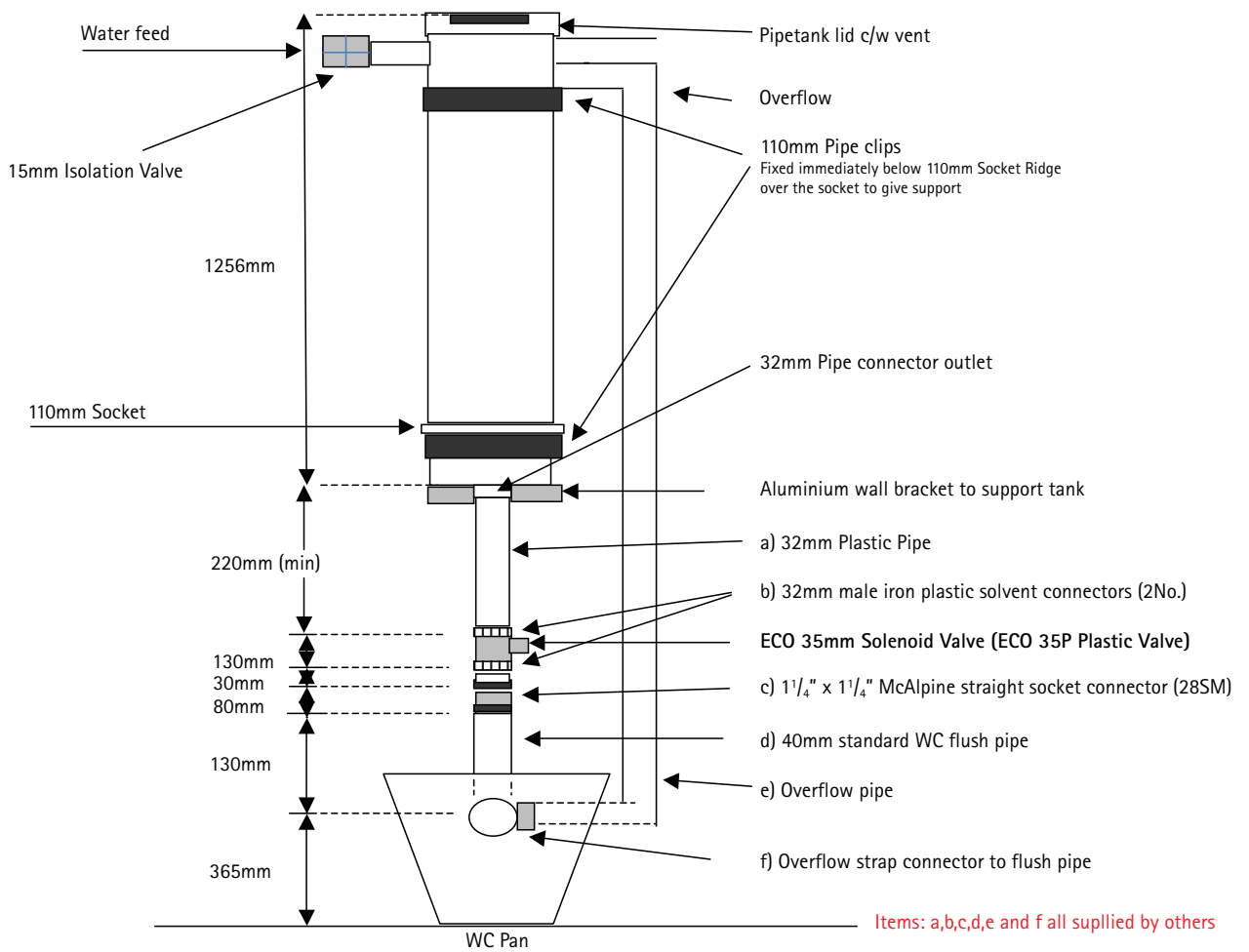
Water Content: 10litres Weight Including Water: 14kg



ECO PIPETANK 110 AND 160

DIAGRAM C
ECO PIPETANK 110 WITH ECO 35P PLASTIC VALVE

Water Content: 10litres Weight Including Water: 14kg

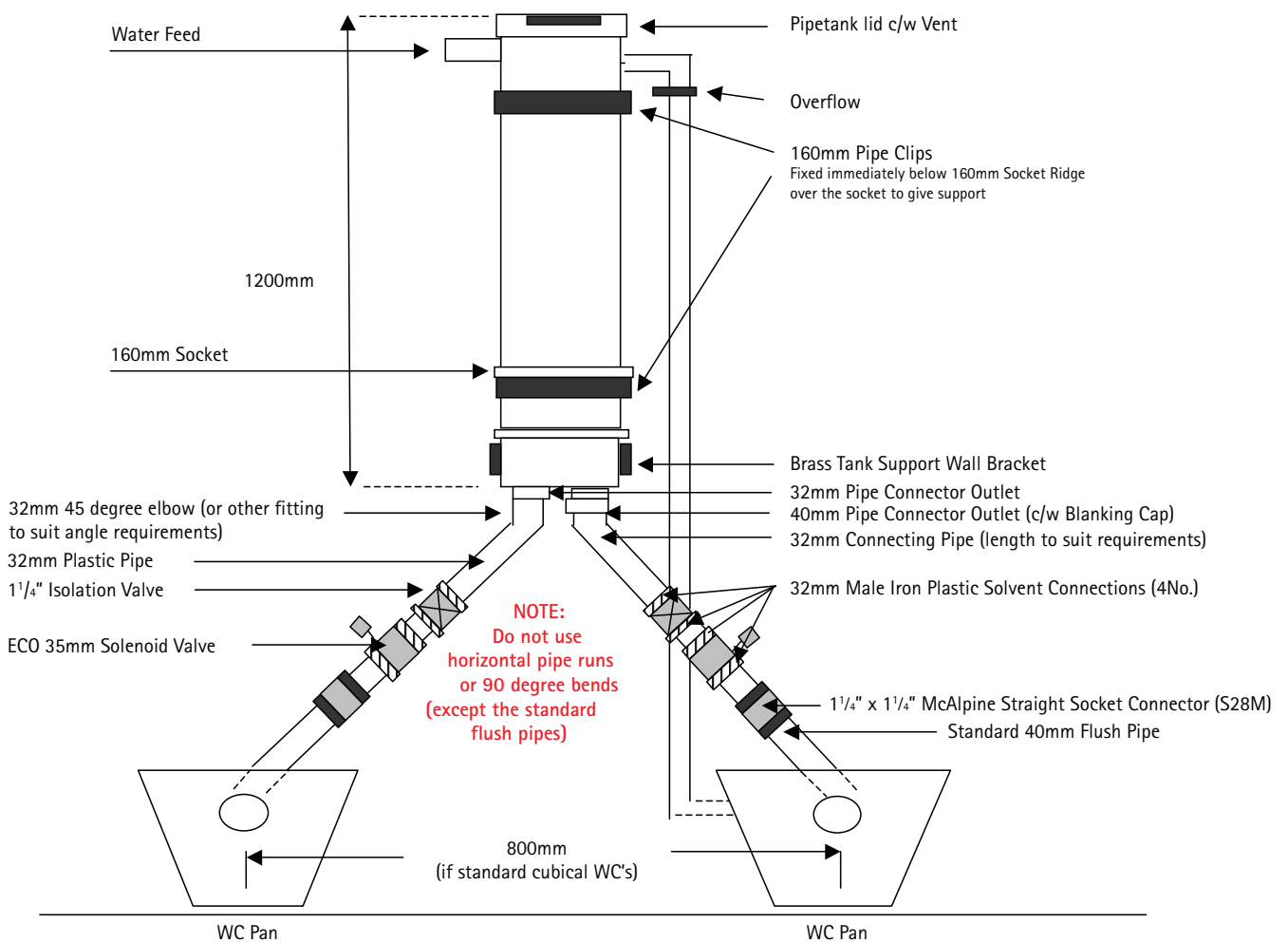


Please note: 90 degree bends must not be used under any circumstances. All bends must be 45 degrees or less, other than the slow bend on the standard flush pipe

ECO PIPETANK 110 AND 160

DIAGRAM D
ECO PIPETANK 160 WITH D8 VALVE

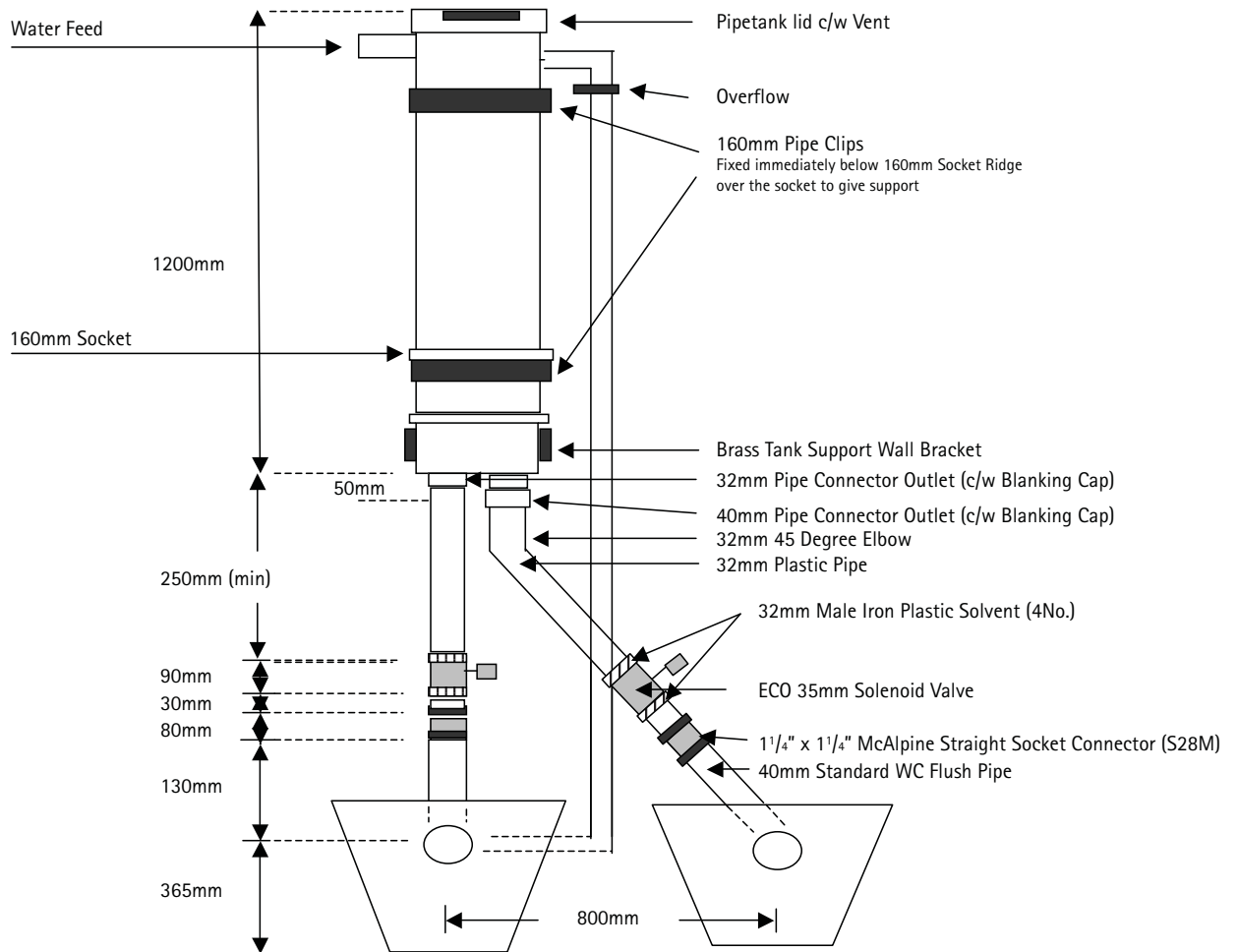
Water Content: 20 litres Weight Including Water: 24kg



ECO PIPETANK 110 AND 160

DIAGRAM E
ECO PIPETANK 160 WITH ECO 35P PLASTIC VALVE

Water Content: 20 litres Weight Including Water: 24kg



NOTE: Do not use horizontal pipe runs or 90 degree bends (except the standard flush pipes),