

Uniclass L725:N46:D54/6+D71/2	EPIC G61/+H1/:Y33
CI/SfB 54/6+71/2 (53.9)+(74.9) X (T6)	

eco-logic uk

electronic brassware and water controls

the education & sports portfolio

water management for **SCHOOLS, COLLEGES AND RECREATION**

Robust control systems delivering sustainable water and energy savings with low maintenance

ECO-Logic Water and Energy Control

Contents

- 2/3 Control Systems
- 4/5 Handwashing
- 6/7 WC and Urinal Flushing
- 8/9 Showers and Bathfills
- 10 Secure Sanitaryware
- 11 Lockout Systems and Modular Buildings

ECO-Logic UK provides highly effective water and cost saving control systems which deliver sustainable economies with very low maintenance. Our controls combine with a wide range of outlets linked to 'One Touch' or 'Non Touch' sensors, all with automatic flow stops.

Our controls apply to both hot and cold water systems, providing timed flow choices, flow rate regulation and water temperature controls, all adjustable to suit the application or user. Additionally, the robust sensors and controls can also provide maintenance benefits with anti-tamper programmes, lockouts and even WC blockage alerts. The sensors are easy-to-use by all ages, and our flexible systems also enable unique solutions for the less able.

The cost of heated water (approx 52%*) and lighting (approx 24%*) accounts for about 75%* of the typical school energy budget. ECO-Logic Modular Controls have the capability to control water, heating and lighting, and can have a long-term impact on costs and CO2 emissions. In the drive for energy efficiency and secure controls, they can be configured to meet your exact requirements.

*Carbon Trust GPG343

Principle of Control

A 'One Touch' or 'Non Touch' sensor activates the solenoid valve via an ECO Controller, releasing water to the outlet. Flow times, operational modes and anti-tamper controls can be set to suit management and user needs.



SENSOR



CONTROLLER



OUTLET



VALVE

Proven Technology

ECO-Logic controls are digital and solid state and run on proven, ultra-safe 6volt technology using battery or mains reduced power. For mains power we supply a range of robust ECOTrans 230v/6vDC transformers, with the battery retained as a backup in case of mains power failure. With our environmentally safe lithium batteries a life of 3-5 years can be expected, depending on usage.

Ease of Installation

Electronic 'One Touch' and 'Non Touch' sensors are designed for heavy use and offer considerable installation advantages. The control systems are digital and solid-state; the only item requiring regular servicing is the solenoid valve.

All plumbing controls use standard components and connections for ease of installation and maintenance.

The control elements are cable linked. To simplify installation, we offer an optional pre-cut cable loom service. The cables are supplied with snap-lock connectors and the relevant labels attached, which also simplifies ongoing maintenance.

Cost Control

A major advantage of using electronic controls is that management can set up water controls that exactly match their requirements (i.e. run time, fill level, flush frequency and water temperature) and can be easily changed to suit alterations in usage.

The ECO-Logic Management Control principle ensures that installations are very water and energy efficient and costly wastage is kept to an absolute minimum. Each basin, shower or bath can be individually programmed to ensure a safe, water saving delivery.

Reliability & Durability

Educational and sports washrooms demand reliability, durability and trouble-free installation. ECO-Logic fulfil this criteria using both 'One Touch' and 'Non Touch' sensors and ensure a stylish, yet practical washroom control system.

We offer:

- Design Advice
- Equipment Scheduling
- Commissioning Services
- Maintenance, Spares and Training
- Supply Packages including Sanitaryware

Guarantees

All ECO-Logic electronic control systems have International Patents and Copyrights and are designed, tested and manufactured in the UK. ECO-Logic systems comply to British and European Standards and use WRAS approved plumbing fittings.

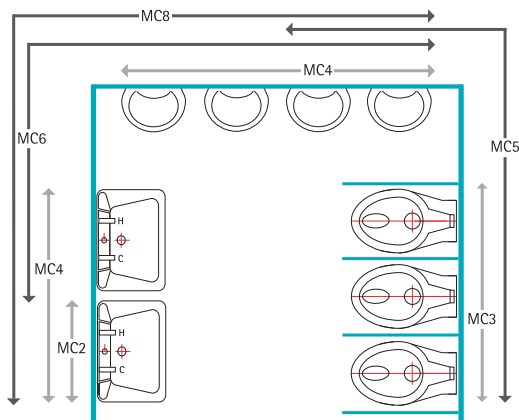
- 5 Year guarantee on Micro-Processors and Sensor Electronics
- 2 Year guarantee on Solenoid Valves if strainer protected
- 1 Year guarantee on Brassware and Fittings

ECO-Logic Services

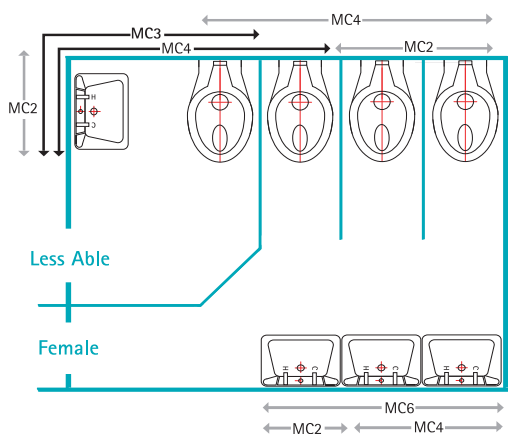
We pride ourselves on being able to respond quickly to client needs. When involved early in design, considerable benefits and cost savings are possible due to the unique flexibility of ECO-Logic controls. These can be in the design, layout or installation of building services, in the low cost of maintenance, or the reduced energy costs.



Male Washroom

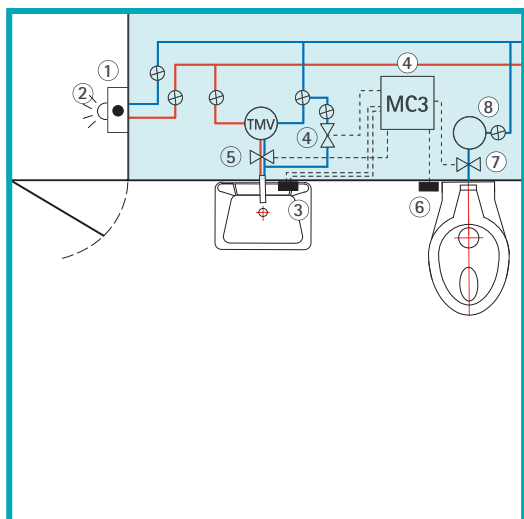


Female and Less Able Washroom



examples of single use multi-channel controllers
 examples of multi-channel mixed use controllers

Typical Student Bathroom



Versatility and Security

Unique flexibility! ECO-Logic Micro-Processors can control up to eight basins, WCs, or showers, or a variety of mixed items, each outlet adjustable to meet requirements.

Additionally, because the water outlet can be separated from the sensors and controllers, we provide more secure design options, by hiding critical control elements in ducts. The user only sees the ECO-Logic sensors and vandal resistant outlets, which are held securely from the back by duct mounted fixings.

Additionally, ECO Controllers can be easily isolated by using an ECO-Logic Lockout System (see page 11).

Power Options

Our safe 6vDC technology uses lithium cell batteries, or a range of ECOTrans transformers, reducing mains power from 230vAC to 6vDC. Infra Red sensors and electronic Super 7 Showers are better served by transformer power and heavily used areas (like sports facilities) can also benefit. Please contact us for more details or visit our website.

ECO-Logic Controllers:

Individual Outlets – Each outlet has its own controller and solenoid valve(s).

Multi-Outlet – to control banks of the same item i.e. basins, WCs or showers. Typically used in sports and school changing rooms.

– to control a number of different outlets. Typically a bathroom with a WC, Basin and Shower in student accommodation and staff rooms.

Modular Controllers – This advanced range integrates additional control elements for bathrooms and accommodation. It is a bespoke design and manufacture service that can be configured to meet your requirements (see page 11). The controllers deliver an enhanced energy efficient and water control package and can enable a simpler procurement chain.

Shutdown Controllers – Buildings, certain rooms or specific equipment can benefit from ECO-Logic Shutdown Controllers which turn off water supplies when areas are unoccupied. These can be automatic or manually controlled (see page 11).



ECO Super-5 Concealed Thermostatic Shower



ECO Simplicity-C Sensor and Outlet



Basin Solenoid Valve



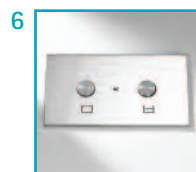
WC Solenoid Valve



ECO Solus Economy Shower Head



ECO Multi-Channel Controller for Basin and WC



ECO Flush Control (Full/Economy)



ECO Pipetank 110 WC Flush Pipe

Handwashing - A Flexible Approach

Electronically controlled brassware allows Architects and Building Teams to consider different design options when designing basins. For instance, separating the outlet from the sensor enables a choice of robust outlets whilst reducing the maintenance factors. Installing sensors which can be deck or wall mounted, rear fixed or concealed, and placing them in positions which are easy to reach and operate is another design benefit. ECO-Logic also supplies a number of handwash options where the outlet and the sensor are combined.

All ECO-Logic sensors provide a choice of operational modes set up by building management to meet user requirements.

Mode 1 Touch to start, Touch to stop – if no 2nd touch then auto-stop times are set as a backup.

Mode 2 Touch to start – water runs for set time and stops automatically.

Other options include anti-tamper settings, lockout switches and temperature monitoring.



ECO Touch Sense (TS)

- A tough, solid state sensor
- No moving parts
- Totally waterproof
- Securely mounted on discs, plates or pedestals.

ECO React Sense (TA)

- Robust, press action switch sensor
- Proven long-life performance
- Mounted as for Touch Sense
- Easy to use



Basin Mounted Sensors



ECO ET45TA(PED60)

- Stylish and robust pedestal
- React sensor for hot or cold use
- Basin or deck mounted
- Ideal for younger users



ECO 2ET41TS(PED60)

- Two sensor pedestal
- Solid, ergonomic design
- Hot and cold sensor choice
- Tough Touch Sense sensors



ECO 2ET41TS(PED75)

- Sensor pedestal
- Dual or single sensor option
- Basin or wall mounted
- Ideal for vandal prone areas
- Matching outlet available

Wall Mounted Sensors



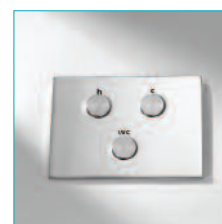
ECO ET41TS(D50)

- Disc mounted Touch Sensor
- Housing for Touch or React Sensors
- Rear conduit fixing for wall/panel
- Choice of conduit lengths



ECO 2ET41TS(PL190/60)

- Combination outlet and sensor(s)
- Shown with Simplicity 150PL outlet
- Single sensor option available
- Rear conduit fixing



ECO ESP3TS Sensor Plate

- Combination plate
- Basin and WC Touch Sensors
- Rear conduit (screwless fixing)

Basin Outlets



ECO Contour



ECO Contour (TS)



ECO Spectre



ECO Simplicity (150P)



ECO VPB515-AL

Vandal Proof

'Non Touch' Sensors

Trans Sense - Leading Edge Technology



- Fully concealed sensor and control
- Non Touch' or 'One Touch' sensor operation
- Sensor surface can be virtually any material (tiles, wood, plastic, glass)
- Vandal resistant and secure
- Unparalleled security
- Complete design freedom
- Highest standards of hygiene
- Pre-selected run times
- Your choice of graphics
- Cost effective long-life installations



Infra Sense



ECO ET42IR(D) Sensor Disc

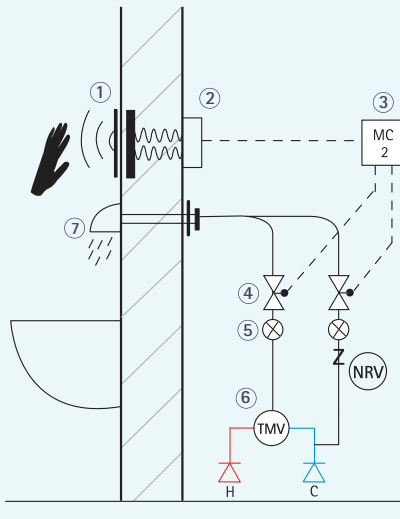
- Automatic hands-free 'Non Touch' sensing
- Disc mounted for wall fixing
- Variable sensor range
- Uses reduced-mains power transformers
- Hot and cold colour markings



ECO ET42IR- Contour

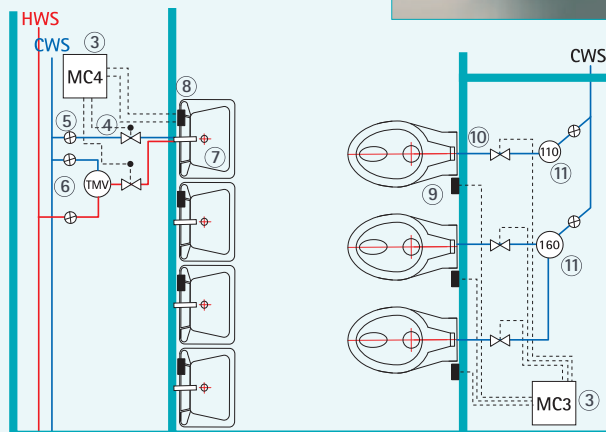
- Automatic hands-free handwashing
- Infra Red sensor tap with outlet
- Variable sensor range
- Choice of operational modes
- Uses reduced-mains power transformers
- *Caution advised on vandal prone installations*

Trans Sense Layout



Washroom Layout

Touch Sensors for basins and WC's and ECO Pipetanks to serve WC's.



Wiring only shown for one basin

Trans Sense

- 1 Sensor Indicators (Hot and Cold)
- 2 Sensor Box

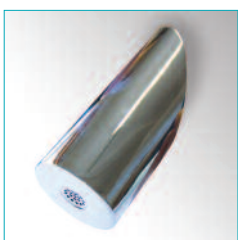
Touch Sense

- 8 Touch Sensors (Hot and Cold)
- 9 Touch Sensors (Full and Economy)
- 10 ECO WC Solenoid Valve
- 11 ECO Pipetank

Common Items

- 3 ECO Controller
- 4 ECO Solenoid Valve
- 5 ECO Isolation Valve and Strainer
- 6 Thermostatic Mixing Valve
- 7 Basin Outlet

Secure Outlets for Vandal Prone Areas



ECO Spectre-W(90)



ECO Simplicity (150PL)



ECO VPBS12-AL(17)



ECO VPBS17-AL



ECO VPBS21-AL

Flushing Systems

Electronic WC Flushing Systems

ECO-Logic has a variety of WC and Urinal flushing control options. Our WC flushing systems work without cisterns behind each WC and use Tanked or Pressurised water supplies (see schematics below). Pressurised systems require no tanks or cisterns. Water supply to the tank in Option 1 can include recovered rainwater supplies or pre-treated recovered waste water.

The ECO-Pipetank is an innovative vertical tank system for WC flushing. It is ideal for space saving behind panel systems or service ducts and can serve up to 3 WCs, depending on tank size and position.

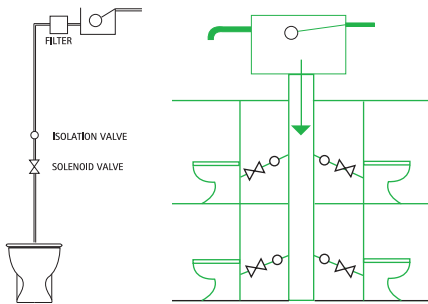
Water flush cycles are setup on the ECO-Logic Controller which link to the solenoid valves on the flush pipe to the WC. Users operate the sensors to initiate a flush cycle. These systems offer many economies:

- No local cisterns - increased security and reduced flood risk
- Reduced water storage - more economic
- Reduced maintenance - only the long life solenoid valve
- Reduced pipework - easier and quicker installation
- Space Saving - options for lower build cost
- Rapid repeat flushing - ideal for busy toilets



1. Dedicated down service tanks

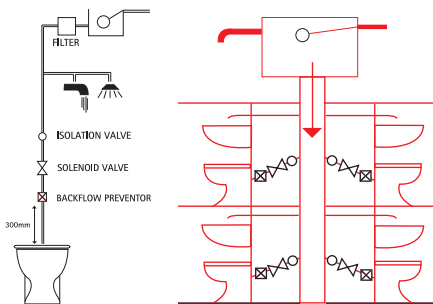
DEDICATED TANK AND DOWN SERVICE FOR WC OR URINALS



Dedicated tanks can be either larger remote or smaller local tanks, close to the WCs. Our multi-channel controllers can control several WCs and we have a range of valves to suit pressure variants.

2. Common down service tanks

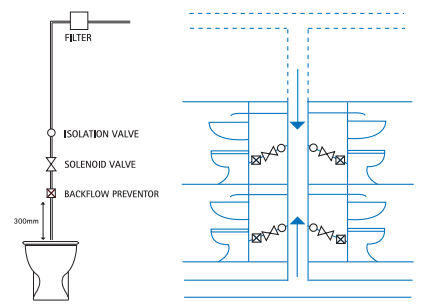
STANDARD DOWN SERVICE WITH BACKFLOW PREVENTOR NEEDED ON WC'S



Where tanks will serve mixed outlets besides the WCs, the installation will require a back flow prevention fitting on the WC or urinal feed pipe. Contact us for installation details.

3. Pressurised or mains systems

PRESSURISED SUPPLY



Rotary time controls on our controllers allow easy and accurate setting of flush volumes to comply with Bye-Laws, and to accurately match site pressures throughout the life of the building.

ECO Pipetanks

The space saving, vertically mounted ECO Pipetank is available in single, double or triple WC flush capacities. They are ideal for ducted access installations or concealed panel systems, where space is at a premium.

ECO Pipetanks are delivered with a pre-fitted float control valve, overflow, outlet connections and support brackets.

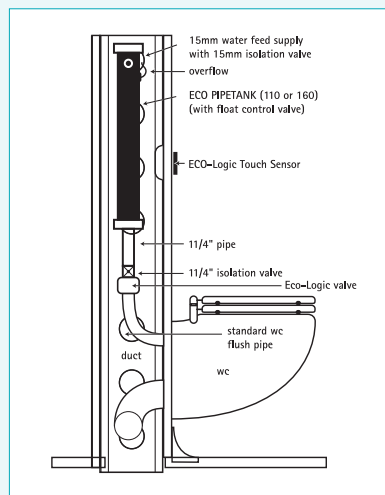
The ECO Pipetanks require an ECO 35P or ECO D8 35mm Solenoid Valve. All solenoid valves are WRAS approved.



ECO D8



ECO 35P



ECO Pipetank 110
(1 No WC)



ECO Pipetank 160
(2 No WCs)

'One Touch' Flush Sensors

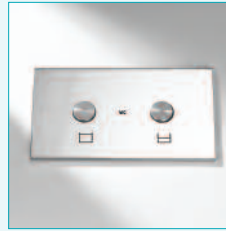
ECO-Logic has two options: 'Touch Sense' - a solid state, high strength Touch Sensor with an extra thick surface, or 'React' - a switch sensor with a light press action. Both sensor types can be disc or plate mounted and can have rear fixings to suit a variety of wall/panel thicknesses. We offer a single flush, or a 'Full and Economy' flush option, or a combination of Basin (Hot and Cold) and WC Flush where appropriate.



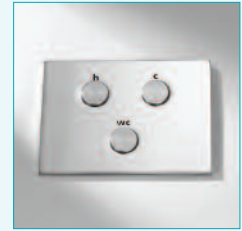
React Sensor Disc



Touch Sensor Disc



'Full' & 'Economy' Flush Plate



Combination Basin & WC Plate

Automatic 'Non Touch' Sensors

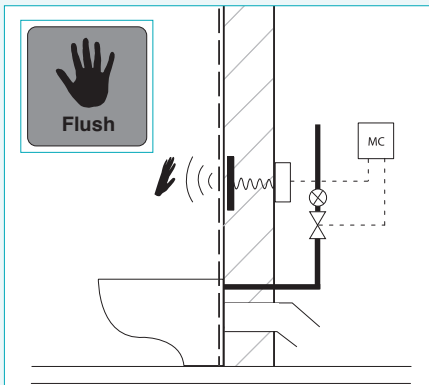
Infra Sense WC Flush Sensor

This proven system can work with any of the flushing systems shown on page 6. The infra red sensors can be mounted in a variety of ways, but usually on a disc for rear fixing through the wall or panel. We advise caution when selecting IR for vandal prone areas, where the Trans Sense system is usually preferable.



Trans Sense WC Flush Sensor

This unique sensor system is ideally suited for both automatic WC and Urinal flushing, and Blockage Alert Systems (see below). The WC Flush Sensor is hidden behind finished wall or panel surfaces and users either place hands in close proximity or lightly touch the sensor target area. It is the perfect system for busy, public use areas.



Urinal Flushing

ECO-Logic has a range of water-efficient, automatic urinal flush controllers ideal for reducing unnecessary waste. Flush delay programmes can be set and a Duty Flush automatically activates if the urinal is not used in a 24 hour period. These controls are ideal for urinal bowls, troughs and stalls.

Cistern Controllers



ECO EU9

- Ceiling or wall mounted
- Senses approach area in front of urinals
- Adjustable flush frequency
- Easy set-up and commissioning
- 70-90% water saving over uncontrolled systems



ECO EU10

- Controller is concealed behind ceiling tile
 - White PIR sensor secured within ceiling tile
 - Adjustable flush frequency
 - Easy set-up and commissioning
 - 70-90% water saving over uncontrolled systems
- Battery or reduced-mains power option*

Individual Bowls

The Urinal Flush Sensor secures onto the waste pipe and when it senses use it will activate either a 'timed release' or 'per visit' flush cycle. All sensors and cables remain hidden and activation is based on usage only.

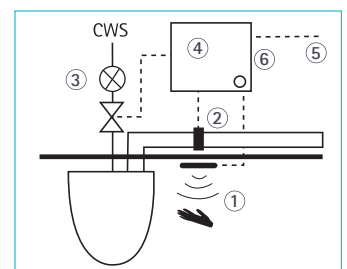


ECO EU13CT

- Ideal for a range of urinal bowls
- Fully concealed sensors on each bowl
- Initiates flush cycle for that bowl alone
- Totally vandal resistant
- Low maintenance system
- Easy installation
- Battery or reduced-mains power option

WC Blockage Alert

WC Flushing is initiated by an ECO-Logic Sensor (1). If the ECO Trans Sense Blockage Alert Sensor (2) detects no flow through the waste pipe, it signals a blockage to the ECO Controller (4) and prevents further flush activations by closing the solenoid valves (3). A blockage alert signal (5) can be sent to a control point or management system. When the blockage is cleared, the Reset Button (6) resumes normal use. The ECO-Logic Blockage Alert can also work with conventional cistern pipework - contact us for more details.

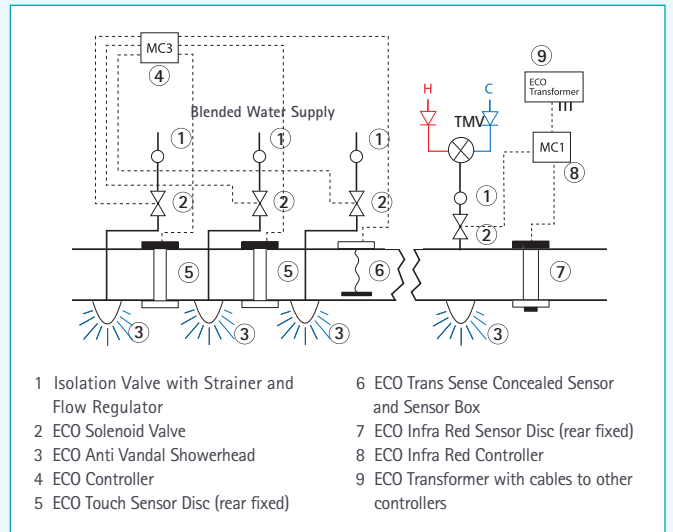


Showers for Sport

Safe Showering

ECO-Logic is a leader in electronic shower and bath controls. Over many years we have developed a wide range of 'One Touch' and 'Non Touch' sensor controllers and fittings. The range includes proven designs that are solid and reliable, and capable of withstanding the rigours of constant use, including some users who may be intent on mischief and vandalism.

The choice is extensive with fittings to suit communal showers, cubicles or individual controllers. The electronics can include flow time control (with auto-stop), engage anti-tamper and safety cut-outs, lockouts and disinfection systems, or even basin and WC controls for Shower Rooms.



Showerheads

ECO-Logic has a varied range of vandal-proof and solus shower fittings. These are some of our more robust options but more examples can be seen on our website.



ECO VPS11-AL

- Vandal resistant and anti-ligature
- Rear conduit fixing
- 'Through-the-wall'/panel mounting
- Recessed angle inlet options
- Solid brass construction
- Anti-rotation pins



ECO SPECTRE

- Robust showerhead with adjustable angle
- Rear conduit fixing
- 'Through-the-wall'/panel mounting
- Solid brass construction

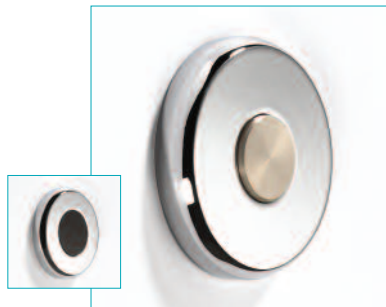


ECO VPS19P -AL

- Pre-plumbed shower panel
- Top or back pipework entry
- Individual or multi panel control
- Other designs available

Shower Sensors

Easy to use and well proven in robust and vandal prone environments, our sensors link with ECO-Logic Controllers and valves to deliver management choice of flow times and operational modes.



ECO Touch Sensor Disc

- Disc mounted Touch Sensor
- Rear conduit fixing
- Choice of shower modes
 - Touch to start, touch to stop
 - Fixed run times
- Auto-stop as standard
- Infra Red option



ECO Touch Sensor Plate

- Plate housing for Touch Sensor
- Screwed or screwless fixings
- Graphics or colour engraving
- Auto-stop as standard



ECO Compact-S-AL

- Combines flow and temperature control
- High quality thermostatic controller
- User selects temperature and flow time
- Controls hidden behind panel or in duct
- Unique solution for vandal prone areas
- Choice of control knob designs - vandal resistant option shown

Individual Controllers

Super 5 Shower



- High quality thermostatic controller
- Temperature display
- Choice of shower times and auto stop
- Remote control option
- Two safety cut-outs to prevent scalding
- Choice of control knob designs
- Complete with plumbing panel built in behind front plate

Super 7 Shower



- Fully digital thermostatic controller
- Preset or variable temperature selections
- Diverts to shower heads or body jets
- Links to booster pump
- Two safety cut-outs to prevent scalding
- Remote control option
- Remote plumbing panel for easy installation and extra security

Double Scald Protection



ECO-Logic Shower and Bathfill Controllers can have temperature monitors fitted, which provide temperature displays and electronic anti-scald protection alongside conventional thermostatic mixing controls.

The electronic monitors have a safe absolute maximum temperature setting that instantly shuts down the flow if that setting is reached and prevents further use until safe temperatures are restored.

ECO thermostatic valves have full WRAS and Build Cert Certification and a choice of 15/22mm inlet/outlet connectors.

Safe Bathfill Controllers

ECO-Logic is a leading provider of robust, temperature controllers for bathfilling, with a wide range of easy-to-use electronic Touch Sensor control systems. Some offer integral water temperature monitors with double scald protection, whilst others display a more basic choice of sensors for installations where only limited functions are required. All the controllers have automatic fill-level control and most have tamper-proof delay options.

ECO Select



- Limited function controllers
- Wall or deck mounted
- Designed for robust installations
- Screw fixed, or screwless plate (as shown)
- One or two fill level choices with autostop
- Pre-mixed water temperature (via TMV)
- Separate Top-Up/Stop sensor option

ECO Compact-B(AL)



- High quality thermostatic controller
- Fill level control pre-set by management
- Re-fill delay options for added safety
- Secure screwless plate
- Controls hidden behind panel or duct
- Choice of blender knobs (vandal-proof shown)

Bath Outlets

Deck Mounted



ECO Spectre-R(22)

Wall Mounted



ECO VPB14-AL

ECO-Logic Secure Sanitaryware

In Education and Sports buildings accidental damage and vandalism is a high cost factor which ECO-Logic can help to reduce. In some schools prevention of self-harm can also be a consideration requiring robust, anti-ligature solutions. Addressing all these concerns, ECO-Logic has identified a range of extra strong sanitaryware ideally suited to heavily used, vandal prone areas. With a unique combination of secure sanitaryware, electronic water controls and sensors, ECO-Logic provide a comprehensive package for the most demanding environments. Please contact us for details on the full range and to discuss your requirements.

A Complete Package of Secure Fixtures

ECO-Logic Polymer Sanitaryware

Extremely tough polymer products are moulded to eliminate sharp edges, with shrouded waste and outlet connections. With a white satin finish the products are easy to clean and fire, chemical and stain resistant. Shower Trays, Mirrors and Shelves are also available.



ECO-BS-AL

- Anti-ligature shrouded waste pipe cover
- Thick, strong upstand
- Pre-drilled to suit sensors and fittings
- Rear bolts for secure fixing
- Choice of basin waste or plugs
- Touch Sensor plates or concealed Trans Sense



ECO-BS/S-VP

- Extra strength upstand
- Can be holed for disc or plate sensors and outlet
- Rear waste outlet



ECO-WC-AL

- Moulded seat
- Bolted rear fixing
- Waste pipe connections
- ECO-DISWC-AL Disabled Pan also available
- All pans can connect to ECO Blockage Alert Systems (page 7)



ECO-UR-AL

- Anti-ligature shrouded waste
 - Rear bolts for secure fixing
 - Supplies through concealed connections
- Option: Automatic ECO Trans Sense
- Option: ECO Trans Sense can provide a fully automatic flush control system

ECO-Logic Stainless Steel

High grade stainless steel is well proven in secure environments and manufactured to meet UK and EU standards. A highly durable, scratch-resistant, white paint finish is also available for some items. Wash Troughs, Mirrors, Drinking Fountains, Sinks and Baths are also available.



ECO-ELC-BS-218

- Shrouded waste
- Can be fitted with ECO-Logic sensors and outlets.
- Bottom entry for services
- 1½" waste plug



ECO-ELC-U-302

- Wall hung urinal trough with shrouded sparge pipe
- Available in a variety of lengths
- ½" inlet connections and 1½" outlet
- Outlet on left or right
- Material AISI 316
- Optional: Plain sparge pipe



ECO-ELC-WC-40VP

- Floor standing for back-to wall fixing
- Vandal-proof version shown
- Can be pre-filled for toilet seat
- Material AISI 316
- Other designs available



ECO-ELC-UR-345

- Wall hung urinal
- Wall trap connections
- ½" flush pipe connection
- Material AISI 316

Student Accommodation

Modular Bathrooms and Shower Rooms



ECO-Logic offers a unique approach to student accommodation and is an experienced provider to the modular construction industry. The ability to offer bespoke solutions is a major benefit in many multiple bathroom projects. Indeed, electronic controls provide more options than conventional systems, often with enhanced performance and lower maintenance.

Our new range of Modular Controllers offers service designers an integrated package of accommodation and bathroom controls. Besides water control, they include low voltage lighting, heating, air movement, room call and emergency telephone facilities, all with BMS Links. Television and audio links can also be incorporated. The modular controllers are tailored to meet your installation and energy efficiency requirements, and enable designers to work with one multi-functional provider, ECO-Logic UK.

All ECO-Logic controllers and sensors carry a 5 year guarantee and a long, trouble-free life is our design objective. Please call us to discuss your scheme in more detail.

Lockout Switch - Control Box



- All ECO Controllers have anti-tamper programmes
- To assist maintenance or prevent misuse, the Controllers can be fitted with a manually operated On/Off switch to close down water supply
- A third switch option can open all valves for disinfection
- Lockout switches can be mounted on a separate plate
- For multiple accommodation (i.e. Student Halls, Boarding Schools) a multi-switch lockout plate can be installed centrally, in the maintenance office for example

Keyswitch



Two types are available - key operated or magnetic fob latching (as shown). This is a separate key operated switch to isolate controllers or outlets. It is connected to the controller but housed separately on metal plates or boxes. The control of specific outlets remains with the staff who retain the key or fob after use. This is particularly suitable for schools with disabled children who require assistance when bathing.

Flood Sensor



The ECO-Logic Flood Sensor links to the ECO Controller and closes all water flow when 'flood' level is reached (approx 2mm). The unit fixes at low level to the wall and is protected from normal cleaning regimes.

Shutdown Controls



A range of automatic or manual shutdown controls designed to close down hot and cold water services to toilet blocks and sports halls or individual areas, such as washrooms, shower areas or laboratories when unoccupied. The controllers eliminate water wastage and damage caused by water fittings leaking or left running, or due to vandalism.

- Fully automatic - open when occupied, shuts off water when building or area is unoccupied
- Can provide automatic 'shut off' frost protection
- Operates 24 hours a day, 365 days a year. No time clocks to reset
- Powered by long-life 6vDC battery packs or mains power transformers
- Can control single or multiple pipe supplies.

A manually controlled system using secure touch sensors, key switches or latching switches is also available.

other eco-logic uk portfolios are available;



call us for more information on 0121 766 3016
email info@ecologicuk.com or visit www.ecologicuk.com

eco-logic uk

ECO-Logic (UK) EMPS Limited
Elite House, 70 Warwick Street
Birmingham B12 0NL, UK
T: +44(0)121 766 3016
F: +44(0)121 766 3064
E: info@ecologicuk.com
W: www.ecologicuk.com