

Uniclass L725	EPIC G61/+H14/
CI/SfB (53.9) +(74.49)	X

eco-logic

electronic brassware and water controls

the leisure portfolio

water management for **LEISURE & COMMERCIAL ENVIRONMENTS**

Where style and durability combine to deliver substantial water and energy savings and low maintenance.

ECO-Logic Control Systems

Contents

- 2/3 The Control System
- 4/5 Handwashing
- 6/7 WC and Urinal Flushing
- 8/9 Showers and Bathfills
- 10 En-suite Bathrooms and Modular Buildings
- 11 Secure Sanitaryware

Products designed specifically for leisure and commercial markets need to fulfil a variety of objectives – stylish to reflect the mood of the establishment, yet reliable enough to withstand the rigours of constant use. ECO-Logic combine these qualities perfectly with their range of electronic sanitary controls for wash basins, showers, baths, urinals and WCs.

Using stylish and easy to use 'Touch' and 'Non Touch' Sensors, with individual or multi-outlet controllers, ECO-Logic delivers excellent water economies whilst meeting user and management expectations.

ECO Electronic controls have set new standards in leisure markets due to their proven reliability, cost effective operation and low maintenance. Secure installation methods have increased this confidence, together with the significant operational savings available throughout the life of a building.

Principle of Control

The user operates the outlet by a 'One Touch' or 'Non Touch' Sensor, which activates the solenoid valve via an ECO Controller, releasing water to the outlet. Flow time, mode of operation and anti-tamper controls can be set to suit management needs.



SENSOR



CONTROLLER



OUTLET



VALVE

1. Style & Durability

Modern washrooms, changing rooms and bathroom designs for the leisure industry demand reliability, durability and trouble-free installation. Fulfilling all these criteria, the unlimited flexibility of ECO 'One Touch' and 'Non Touch' sensors deliver ease of use and ensure a practical installation that can meet a high style or an anti-vandal requirement.

2. Cost Control

A major advantage of using electronic controls is that management can set up water controls that exactly match their requirements (i.e. run time, fill level, flush frequency and water temperature) and can easily instigate changes to suit alterations in usage patterns.

The ECO-Logic Total Management Control principle ensures that installations are very water efficient and that costly water wastage is kept to an absolute minimum.

3. Proven Technology

ECO-Logic controls are digital and solid state and run on proven, ultra safe 6volt battery technology. For mains power we supply a range of robust 230v/6vDC transformers. When supplying transformers, the battery is retained as a back-up should mains power failure occur. Typically a battery life of 3-5 years can be expected.

4. Ease of Installation

We offer a pre-fitted wiring loom, which delivers all the cables with easy snap-lock sockets and the relevant labels attached. This makes for easy installation and simplified ongoing maintenance.

5. Guarantees

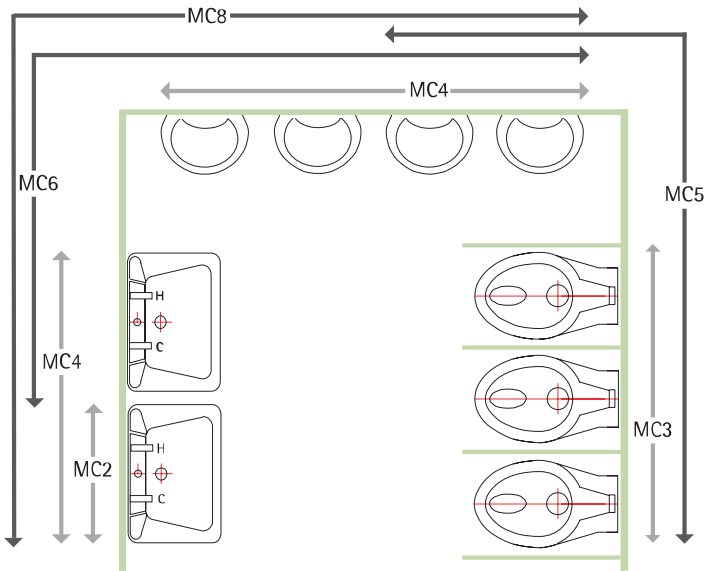
All ECO-Logic electronic control systems have International Patents and Copyrights and are designed, tested and manufactured in the UK. ECO-Logic systems are approved by BS/EC and WRC. The electronics are CE approved.

Designed for Leisure

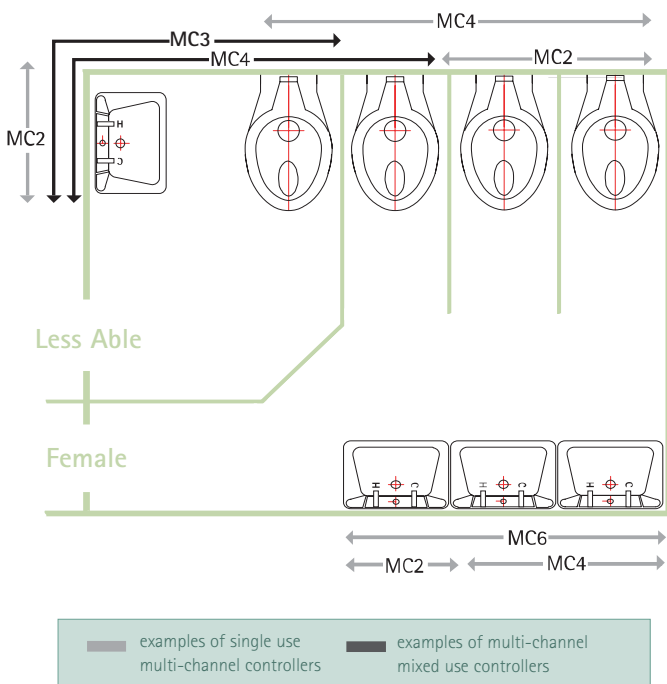
Sports Centres
Fitness Clubs
Community Centres
Pubs & Clubs
Bars & Restaurants
Hotels
Resorts
Theatres & Cinemas
Shopping Centres
Offices

- 5 Year guarantee on Micro-Processors and Sensor Electronics
- 2 Year guarantee on Valves if protected
- 1 Year guarantee on Brassware and Fittings

Male Washroom



Female and Less Able Washroom



Unique flexibility – a single ECO-Logic Micro Processor can control up to eight basins, or WCs, or showers, or a variety of mixed items. Additionally, because the water outlet can be separated from the sensors and controllers, ECO-Logic provide more secure design options, by hiding critical control elements in ducts. The user only sees the sensors and outlets, which are held securely from the back by duct mounted fixings.

When involved early in design, considerable benefits and cost savings are possible due to the unique flexibility of the ECO-Logic controls. These can be in the design, layout or installation of building services, in the low cost of maintenance, or the reduced energy costs.

Types of ECO-Logic Controllers:

1. Individual

- Each outlet has its own controller and solenoid valve(s).

2. Multi-Channel Controllers

- Serving multiples of the same outlet typically basins, showers or toilets. Each controller can be set up to serve between 2-8 outlets and are typically used in Sports Centres, Schools and commercial washrooms.
- Serving a number of different outlets ie. a basin, a shower and WC. These are ideal for en-suite arrangements in Hotels and pre-assembled POD formations.



We offer:

- Design Refinement/Advice
- Detailed Set-Up Instructions
- Commissioning Services
- Product Training
- Complete Supply Packages
- Secure Sanitaryware



Handwashing - A Flexible Approach

Electronically controlled brassware allows Architects, Engineers and Designers to break from the convention of always placing water controls and outlets together. Separating the outlet from the sensor makes design sense, especially in buildings where sensor fixings and outlets are heavily used. Installing sensors onto plates or discs with rear duct fixings, and delivering water via robust outlets makes for long term, maintenance-friendly peace of mind.

All ECO-Logic 'One Touch' sensors can provide Touch to start, Touch to stop operation. If a second touch is not applied, then auto-stop occurs after the management set run time. If preferred, fixed flow times can be set.

'One Touch' Sensors



Touch Sense

- A tough, solid state sensor
- No moving parts
- Totally waterproof
- Securely mounted on discs, plates or pedestals.

React

- Robust, press action switch sensor
- Proven long life performance
- Mounted as for Touch Sense



Basin Mounted Sensors



ECO 2ET45TA(dia) Contour

- Stylish and robust
- Hot and cold sensors
- Light press action
- Complete with Contour outlet



ECO 2ET41TS(PED60)

- Sensor pedestal
- Dual or single sensor option
- Solid ergonomic design



ECO 2ET41TS(PED75)Ultra

- Sensor pedestal
- Dual or single sensor option
- Basin or wall mounted
- Ideal for vandal prone areas

Wall Mounted Sensors



ECO ET41TS(D50)

- Disc mounted Touch Sensor
- Rear conduit fixing
- Housing for Touch or React Sensor



ECO 2ET41TS(PL190/60)

- Combination outlet and sensor(s)
- Shown with Simplicity 150PL outlet
- Single sensor option available
- Rear conduit fixing



ECO Sensor Plate

- One of a range of sensor plates
- Screwed or screwless fixings
- Graphics or colour engraving

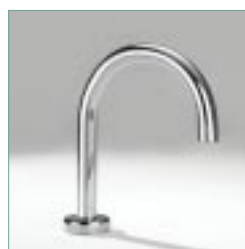
Basin Outlets



ECO Spectre



ECO Spectre-R



ECO Simplicity (150P)



ECO Classic



ECO Connoisseur

'Non Touch' Sensors

Trans Sense Sensors

- Specially designed electronics that sense 'through-the-wall' or finished surface
- Operates without any visible plates or switches
- Sensor surface can be virtually any material
- Unique 'Touch' or 'Non Touch' sensor
- Ideally suited to vandal prone environments

Infra Sense Sensors

- Active and Passive Infra Red systems
- 'Non Touch' sensing
- IR versions can operate on 'close proximity' or 'longer range' modes
- Fully automatic hands-free system
- Caution advised on vandal prone installations

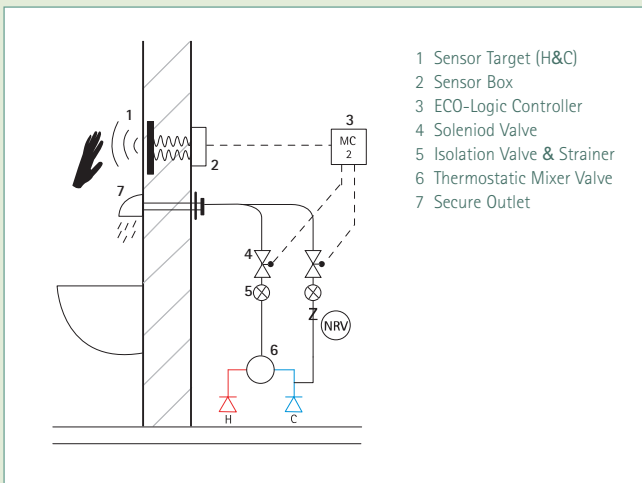


Leading Edge Technology

- Complete design freedom
- Unparalleled security
- Highest standards of hygiene
- Pre-selected run times
- 'Non Touch' close proximity operation
- Display your choice of graphics
- Cost effective long-life installation
- Totally vandal resistant and anti-ligature
- Controls and sensors are easily concealed



Typical Layout - ECO 2ET43CT(HC)



ECO ET42IR(D) Sensor Disc

- 'Non Touch' Infra Red Sensor
- Variable sensor range
- Rear conduit fixing
- Battery or mains power



ECO ET42IR - Contour

- Infra Red sensor tap with outlet
- Variable sensor range
- Choice of operational modes
- Battery or mains power



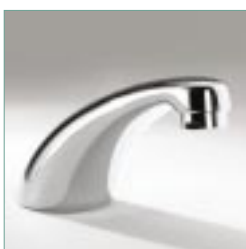
ECO ET42IR(PL70/190) Simplicity 150PL

- Fully automatic 'Non Touch' wash point for wall fixing
- Combined IR sensor and outlet
- Plate mounted - chrome finish
- Choice of operational modes and run times
- Battery or mains power (ECO transformers recommended)

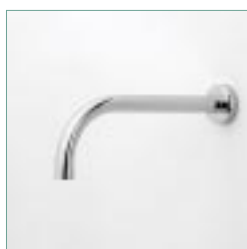


Thermostatic Mixer Valve for pre-blended water available to all 'Non Touch' sensor outlets.

Secure Outlets for Vandal Prone Areas



ECO Contour



ECO Simplicity (150PL)



ECO VPBS12-AL(17)



ECO VPBS17-AL



ECO VPBS15-AL

Flushing Systems

Electronic WC Flushing Systems

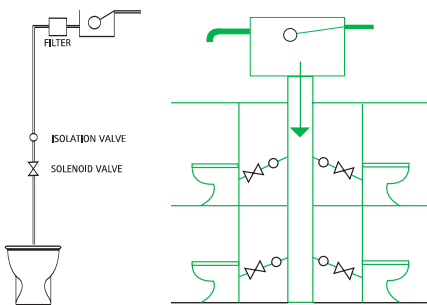
ECO-Logic offers a number of WC control options, including our unique ECO Pipetanks – vertical tanks ideal for space saving behind panel systems or in service ducts. The use of electronics enables the separation of the flushing valve, electronic controller, the sensor and the water storage/tanks. This allows one tank to serve several WCs. We offer 'One Touch' or 'Non Touch' systems with single or dual flush options. Additionally, we can combine sensors for WC flushing and handwashing on one sensor plate.

- Rapid repeat flushing ideal for busy toilets
- Pre-set flush delays optional
- No local cisterns or tanks – more security and less flood risk
- Reduced water storage – more economic and less maintenance
- Less Pipework – space saving and easier installation



1. Dedicated down service tanks

DEDICATED TANK AND DOWN SERVICE FOR WC OR URINALS

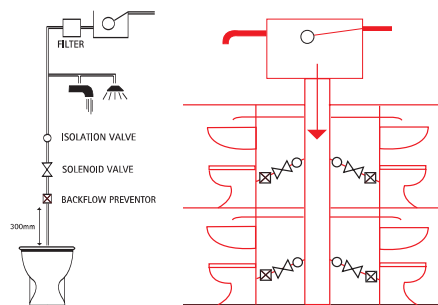


1. Dedicated down service tanks

Dedicated tanks can be either larger remote or smaller local tanks, close to the WCs. Our multi-channel controllers can control several WCs and we have a range of valves to suit pressure variants.

2. Common down service tanks

STANDARD DOWN SERVICE WITH BACKFLOW PREVENTOR NEEDED ON WC'S

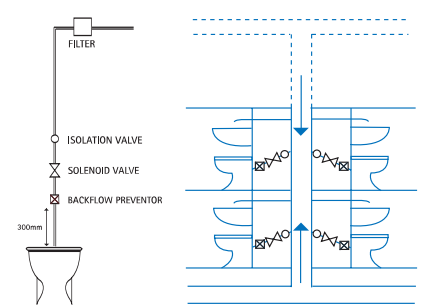


2. Common down service tanks

Where tanks will serve mixed outlets besides the WCs, the installation will require a back flow prevention fitting on the WC or urinal feed pipe. Contact us for installation details.

3. Pressurised or mains systems

PRESSURISED SUPPLY



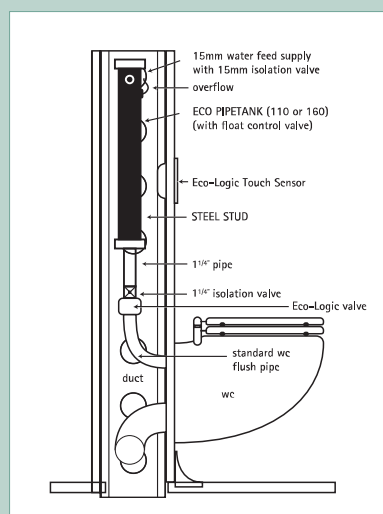
3. Pressurised or mains systems

Rotary time controls on our controllers allow easy and accurate setting of flush volumes to comply with Bye-Laws, and to accurately match site pressures throughout the life of the building.

ECO Pipetanks

An example of ECO-Logic space saving innovation is the vertically mounted, space saving ECO Pipetank range. Available in single or double WC flush capacities, these units are ideal for ducted access installation or concealed panel systems, where space is at a premium.

ECO Pipetanks are delivered with a pre-fitted float control valve, overflow and outlet connections and support brackets.



ECO Pipetank 110
(1 No WC)



ECO Pipetank 160
(2 No WCs)

'One Touch' Sensors

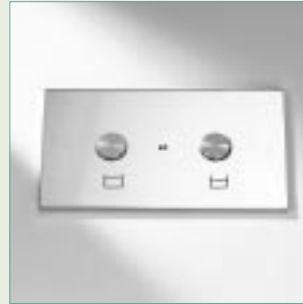
ECO-Logic has two options: 'Touch Sense' - a solid state, high strength sensor with an extra thick surface, or 'React' - a switch sensor with a light press action. Both sensor types can be disc or plate mounted, and can have rear fixings to suit a variety of wall/panel thicknesses. We offer a single flush, or a 'Full' & 'Economy' flush option.



React Sensor Disc



Touch Sensor Disc



'Full' & 'Economy' Flush Plate



Combination Basin & WC Plate

'Non Touch' Sensors

Infra Sense WC Flush Sensor

This proven system can work with any of the flushing systems shown on page 6. The infra red sensors can be mounted in a variety of ways, but usually on a disc for rear fixing through the wall or panel.

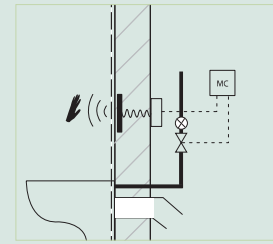
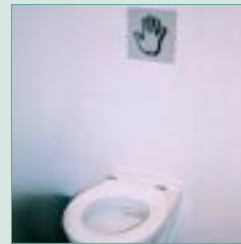


We advise caution when selecting IR for vandal prone areas, where the Trans Sense system is usually preferable



Trans Sense WC Flush Sensor

This unique system can double as a 'Touch' or 'Non Touch' close proximity sensor. The sensor is completely hidden behind the wall/panel surface, making it the perfect system for flushing in vandal prone areas.



Urinal Flushing

ECO-Logic water controls work on low voltage 6VDC for safety (either battery or reduced mains power) and are designed for ease of installation. From cistern controllers for troughs, multiple bowls or slabs, to individual bowl flushing using timed release or 'per visit' flush cycles, we have the solution.

Individual Bowls



ECO EU13CT Trans Sense Controller

- Ideal for a range of urinal bowls
- Fully concealed sensors on each bowl
- Initiates flush cycle for that bowl alone
- Totally vandal resistant
- Low maintenance system
- Easy installation

Cisterns



ECO EU9 PIR Controller

- Ceiling or wall mounted
- Senses approach area in front of urinals
- Adjustable flush frequency
- Easy set-up and commissioning
- 70-90% water saving over uncontrolled systems



ECO EU10 PIR Controller

- Controller is concealed behind ceiling tile
- White PIR sensor secured within ceiling tile
- Adjustable flush frequency
- Easy set-up and commissioning
- 70-90% water saving over uncontrolled systems

Showers for Sports and Leisure

ECO-Logic have a full range of robust, vandal resistant showers. Linked to 'Touch' or 'Non Touch' sensors, ECO electronics can be configured to control flow times, engage safety temperature cut-outs, lockouts and cleaning systems.



Compact-S-AL

- High quality thermostatic controller
- User selects temperature and flow time
- Controls hidden behind panel or in duct
- Unique solution for vandal prone areas
- Choice of control knob designs - vandal resistant option shown



Super 5 Showers

- High quality thermostatic controller
- Temperature display
- Choice of shower times and auto stop
- Remote control option
- 2nd safety cuts out to prevent scalding
- Choice of control knob designs
- Complete with plumbing panel



Super 7 Showers

- Fully digital thermostatic controller
- Preset or variable temperature selections
- Diverts to shower heads or body jets
- Links to booster pump
- 2nd safety cuts out to prevent scalding
- Remote control option
- Remote plumbing panel

Showerheads



ECO Solus 42

- Adjustable angle
- Robust shower arm and fixings
- 4 different shower sprays
- One of a range



ECO Spectre

- Robust showerhead with adjustable angle
- Rear conduit fixing
- 'Through-the-wall'/panel mounting
- Solid brass construction



ECO VPS11-AL

- Vandal resistant and anti-ligature
- Rear conduit fixing
- 'Through-the-wall'/panel mounting
- Recessed angle inlet options
- Solid brass construction
- Anti-rotation pins

Disc

- Disc mounted Touch Sensor
- Rear conduit fixing
- Choice of shower modes
 - Touch to start, touch to stop
 - Fixed run times
- Auto-stop as standard
- Infra Red option

Plate

- Plate housing for Touch Sensor
- Screwed or screwless fixings
- Graphics or colour engraving
- Auto-stop as standard

Trans Sense

- Unique 'Touch' or 'Non Touch' Sensor
- Sensor concealed behind wall surface
- Complete design freedom
 - Colour, graphic, text - you choose
- Highly secure
- Easy to install and low maintenance
- Auto stop as standard

Shower Sensors



Bathfill Controllers

All bathrooms can benefit from controlled bathfill operation – easy to use touch controls, secure in function to prevent overfills and flooding, and safe in temperature control to prevent scalding. Users have full control, complete safety and total relaxation.

ECO Senator Range



Featuring an LCD temperature display and a selection of bath fill levels, this range has a top-up facility, automatic waste plug and an optional divert to shower. Temperature controls can be preset, or temperature choice can be provided by a blender valve (see below). Safe water temperature is ensured using thermostatic mixers, and by engaging our '2nd safety' cut out option which prevents scald temperatures. The control plate can be positioned in the most convenient place for the user.

ECO Superior Range



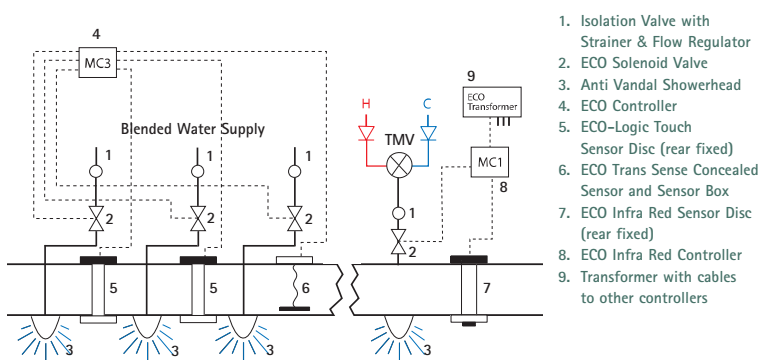
This is our ultimate Bathfill range packed with innovation for the ultimate bathing experience. Every option is catered for – even a remote control plate from the bedside! Water temperature control is ensured by using state-of-the-art digital controls to drive thermostatic mixer valves, or selecting a number of pre-set temperatures. A choice of fill levels can also be pre-set and an electronic waste plug is optional. Separate selections are also available when you divert to shower (with optional 'boost' control).



This ECO Senator Bathfill Set includes

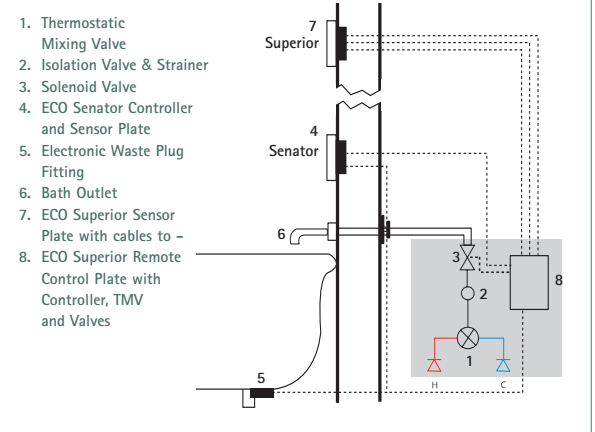
- Bath Temperature Blender with Plate Mounted Bath Outlet
- Pull-Out Hand Shower Fitting
- LCD Temperature Display
- Choice of Bathfill Levels
- Automatic Waste Plug
- Divert Sensor for Shower

Communal Showering



1. Isolation Valve with Strainer & Flow Regulator
2. ECO Solenoid Valve
3. Anti Vandal Showerhead
4. ECO Controller
5. ECO-Logic Touch Sensor Disc (rear fixed)
6. ECO Trans Sense Concealed Sensor and Sensor Box
7. ECO Infra Red Sensor Disc (rear fixed)
8. ECO Infra Red Controller
9. Transformer with cables to other controllers

Bathfill Schematic



1. Thermostatic Mixing Valve
2. Isolation Valve & Strainer
3. Solenoid Valve
4. ECO Senator Controller and Sensor Plate
5. Electronic Waste Plug Fitting
6. Bath Outlet
7. ECO Superior Sensor Plate with cables to -
8. ECO Superior Remote Control Plate with Controller, TMV and Valves
9. Transformer with cables to other controllers

ECO-Logic 'Total Management Control' for En-suite Bathrooms

Outstanding control flexibility enables ECO-Logic to offer a unique approach to multiple bathroom providers such as hotels and other serviced accommodation. ECO-Logic controllers can link all the outlets in the bathroom and allow users full control over the facilities, whilst ensuring high levels of discreet management control. Added benefits include automatic level controls for bathfill, easy diverts to showers and electronic waste plug operation.

For luxury installations, our systems can link with intelligent integrated room controls, and provide remote operations for bathfill and shower. ECO-Logic control systems offer a cost effective bespoke solution, based upon operators needs, and are ideal for multi-en-suite projects. We welcome your enquiries.



- Run time/fill level control
- Easy to use 'One Touch' and 'Non Touch' sensors
- Stylish outlets and fittings
- Water and Energy Efficiency
- Very Low Maintenance
- Light/Fan Operation
- Heated Towel Rails
- Electronic Waste Plug
- Remote Operation from bedside
- Connection to BMS (Building Management Systems)
- Flood Sensors
- Safety options

Modular Bathrooms & Shower Rooms

ECO-Logic is an experienced provider of quality water control systems to the modular construction industry. The ability to offer bespoke solutions to meet clients needs is a major benefit in many multiple bathroom design projects.

Additional space can be found by using the unique ECO Pipetank with ECO-Logic WC flushing systems, or by using pressurised or remote tank systems (see page 6).

All ECO-Logic controllers and sensors carry a 5 year guarantee and a long, trouble-free life is our design objective.



Bath Outlets



ECO Simplicity (175PL)22



ECO Simplicity (250P)22



ECO Spectre Range



ECO Classic



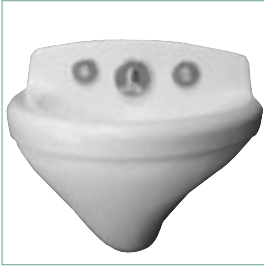
ECO Connoisseur

Secure Sanitaryware

ECO-Logic has identified a range of high quality secure sanitaryware to complement our tough, easy to use electronic brassware controls. Available in Polymer Composite or High Grade Stainless Steel the range is ideally suited to heavy use, vandal prone installations. For details on the full range of ECO Secure Sanitaryware please call us on 0121 766 3016.

ECO Polymer Sanitaryware

ECO GYP-BS-AL



One of a range of composite basins for wall or deck mounting with high vandal resistance and anti-ligature features. Rear security bolts and shrouded waste outlets are standard, and upstands can be drilled to accommodate a variety of fittings.

ECO GYP-UR-AL



This highly durable urinal bowl features shrouded waste trap and water connections. Bolted rear fixings ensure security and accessibility.

ECO GYP-WC-VP



Our range includes vandal resistant, anti-ligature and disabled WC pans. Features include a moulded seat, bolted rear fixing, waste and water pipe connections and a large waste pipe to help prevent blockages.

ECO Stainless Steel Sanitaryware

ECO BS-AL-50/47



High quality finish with generous upstand and bowl. Waste is fully shrouded and secures firmly to wall.

ECO UR-VP-345



Wall hung urinal bowl with shrouded waste. Available with top or rear outlet.

ECO WC-AL-40



Our range includes wall hung and back-to-wall units, and wall/floor fixed units.

ECO Shutdown Controllers



A range of automatic and manual shutdown controls designed to close hot and cold water services to buildings or individual areas, such as washrooms and shower areas when unoccupied. These controllers eliminate water wastage and damage caused by water fittings left running, or leaking due to vandalism.

- Automatic systems operate 24 hours a day, 365 days a year. No time clocks to reset
- Battery or mains power options
- Manual systems are securely operated with key or magnetic switches

Lockout Switch - Options

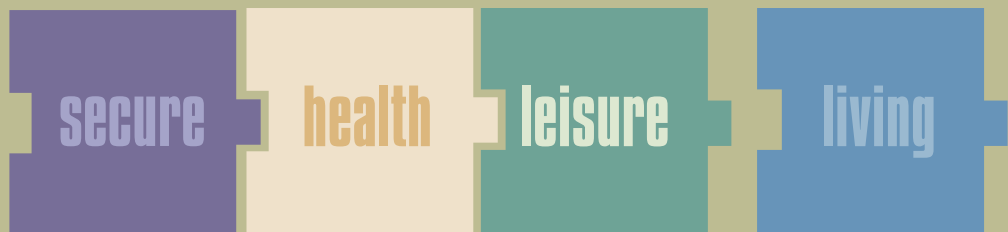


All ECO Controllers have short anti-tamper programmes to prevent overuse at individual outlets.

Controllers can also be fitted with a manually operated On/Off switch to close down all outlets in the event of misuse or maintenance.

Switches can be mounted separately if preferred.

other eco-logic portfolios are available;



call us for more information on 0121 766 3016
email info@ecologicuk.com or visit www.ecologicuk.com

eco-logic

ECO-Logic (UK) EMPS Limited
Elite House, 70 Warwick Street
Birmingham B12 0NL, UK
T: +44(0)121 766 3016
F: +44(0)121 766 3064
E: info@ecologicuk.com
W: www.ecologicuk.com